



Corporate Headquarters
7 Pleasant Hill Road
Cranbury, NJ 08512

Tel: 732.390.5858 • Fax: 732.390.9496
www.whitmanco.com

April 25, 2017

Ms. Rhonda Wilson
New Horizons Community Charter School
45-59 Hayes Street
Newark, NJ 07103

RE: Potable Water Sampling Results for Lead
New Horizons Community Charter School
45-59 Hayes Street
Newark, Essex County, New Jersey
Whitman Project #16-03-18T

Dear Ms. Wilson:

On March 14, 2016, March 1, 2017, and March 11, 2017, Whitman collected a total of 55 water samples at the New Horizons Community Charter School. The samples were collected from all water outlets in the original school and newly completed school addition, with the exception of one (1) sink in the boy's bathroom of the new addition due to a malfunctioning sensor. The March 14, 2016 potable water samples were analyzed for lead by Integrated Analytical Laboratories LLC (IAL) of Randolph, New Jersey (NJ Certification #14751). The March 1 and March 11, 2017 potable water samples were analyzed for lead by Precision Analytical Services, Inc. of Toms River, New Jersey (NJ Certification #15001). Please see the attached Figures 1A through 1C identifying sample locations.

Sampling for all three events was conducted in accordance with the Quality Assurance Project Plan (QAPP) and associated Sampling Plan, which includes the requirement that the water source remain unused for a minimum of 8 hours prior to sampling.

Analytical results for lead ranged from not detected (ND) to 14.3 micrograms per liter ($\mu\text{g/L}$). These results are all below the New Jersey Department of Environmental Protection (NJDEP) and United States Environmental Protection Agency (USEPA) action level for lead of 15 $\mu\text{g/L}$, indicating that no further action is necessary at this time. The analytical results are shown on Table 1.

If you have any question or comments regarding this submittal, do not hesitate to contact our office at 732-390-5858.

Sincerely,

A handwritten signature in blue ink, appearing to read 'Jessica A. Trifiro'.

Jessica A. Trifiro, LEED AP
Senior Project Manager

JAT/ak
Attachments

Creating Solutions. Exceeding Expectations.

TABLE 1

**New Horizons Community Charter School
45-59 Hayes Street, Newark, New Jersey
Summary of Lead Results for Potable Water**

Sample ID Lab Sample Number Sampling Date Units	NJDEP Action Level ug/l	WF-1-A 02204-001 3/14/16 ug/l RL	WF-1-B 02204-002 3/14/16 ug/l RL	WF-2-A 02204-003 3/14/16 ug/l RL	WF-2-B 02204-004 3/14/16 ug/l RL	WF-3-A 02204-005 3/14/16 ug/l RL	WF-3-B 02204-006 3/14/16 ug/l RL	HW-K-1 02204-007 3/14/16 ug/l RL	1FL-BS-1 P17-0996-01 3/1/17 ug/l RL	1FL-NS-1 P17-0996-02 3/1/17 ug/l RL	1FL-BS-2 P17-0996-03 3/1/17 ug/l RL	1FL-FP-3 P17-0996-04 3/1/17 ug/l RL	1FL-KBS-1 P17-0996-05 3/1/17 ug/l RL
Lead	15	ND 2.0	1.44 2.0	11.6 2.0	4.73 2.0	ND 2.0	2.31 2.0	ND 2.0	0.916 J 2.0	0.649 J 2.0	ND 2.0	1.18 J 2.0	0.916 J 2.0

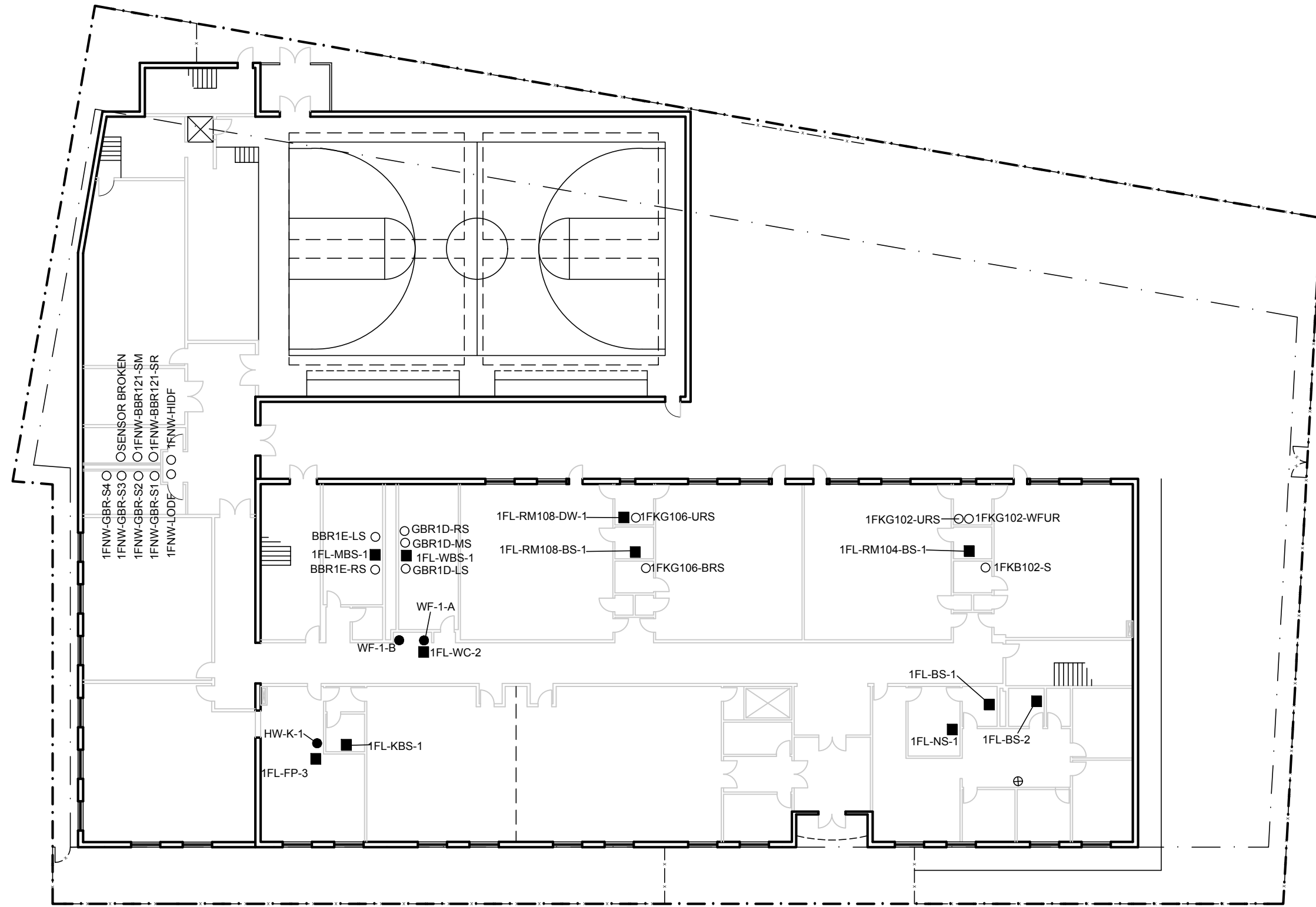
Sample ID Lab Sample Number Sampling Date Units	NJDEP Action Level ug/l	1FL-MBS-2 P17-0996-06 3/1/17 ug/l RL	1FL-WBS-2 P17-0996-07 3/1/17 ug/l RL	1FL-WC-3 P17-0996-08 3/1/17 ug/l RL	1FL-RM108-BS-1 P17-0996-09 3/1/17 ug/l RL	1FL-RM108-DW-1 P17-0996-10 3/1/17 ug/l RL	1FL-RM104-BS-1 P17-0996-11 3/1/17 ug/l RL	3FL-WC-1 P17-0996-12 3/1/17 ug/l RL	3FL-WBS-1 P17-0996-13 3/1/17 ug/l RL	3FL-MBS-2 P17-0996-14 3/1/17 ug/l RL	2FL-WC-2 P17-0996-15 3/1/17 ug/l RL	NH-GBR1D-SR P17-1159-01 3/11/17 ug/l RL	NH-GBR1D-MS P17-1159-02 3/11/17 ug/l RL
Lead	15	ND 2.0	ND 2.0	0.649 J 2.0	0.649 J 2.0	ND 2.0	ND 2.0	ND 2.0	ND 2.0	1.99 J 2.0	ND 2.0	1.25 J 2.0	1.46 J 2.0

Sample ID Lab Sample Number Sampling Date Units	NJDEP Action Level ug/l	NH-GBR1D-LS P17-1159-03 3/11/17 ug/l RL	NH-BBR3K-RS P17-1159-04 3/11/17 ug/l RL	NH-BBR3K-LS P17-1159-05 3/11/17 ug/l RL	NH-GBR3J-LS P17-1159-06 3/11/17 ug/l RL	NH-GBR3J-RS P17-1159-07 3/11/17 ug/l RL	NH-ART-SL2F P17-1159-08 3/11/17 ug/l RL	NH-ART-SR2F P17-1159-09 3/11/17 ug/l RL	NH-STEM-3FS P17-1159-10 3/11/17 ug/l RL	NH-BBR2I-LS2F P17-1159-11 3/11/17 ug/l RL	NH-BBR2I-MS2F P17-1159-12 3/11/17 ug/l RL	NH-BBR2I-RS2F P17-1159-13 3/11/17 ug/l RL	NH-1FKG106-URS P17-1159-14 3/11/17 ug/l RL
Lead	15	1.25 J 2.0	14.3 2.0	1.66 J 2.0	1.66 J 2.0	0.639 J 2.0	0.639 J 2.0	ND 2.0	8.21 2.0	1.25 J 2.0	ND 2.0	0.844 J 2.0	ND 2.0

Sample ID Lab Sample Number Sampling Date Units	NJDEP Action Level ug/l	NH-1FKG102-WFUR P17-1159-15 3/11/17 ug/l RL	NH-1FKB102-S P17-1159-16 3/11/17 ug/l RL	NH-1FKG102-URS P17-1159-17 3/11/17 ug/l RL	NH-GBR2H-MS P17-1159-18 3/11/17 ug/l RL	NH-1FKG106-UWF P17-1159-19 3/11/17 ug/l RL	NH-GBR2H-LS (2F) P17-1159-20 3/11/17 ug/l RL	NH-BBR1E-LS P17-1159-21 3/11/17 ug/l RL	NH-1FKG106-BRS P17-1159-22 3/11/17 ug/l RL	NH-GBR2H-RS P17-1159-23 3/11/17 ug/l RL	NH-2FWFL-BYGR P17-1159-24 3/11/17 ug/l RL	NH-1FNW-BBR121-SM P17-1159-25 3/11/17 ug/l RL	NH-1FNW-GBR-S1 P17-1159-26 3/11/17 ug/l RL
Lead	15	ND 2.0	0.639 J 2.0	0.844 J 2.0	0.639 J 2.0	ND 2.0	ND 2.0	1.46 J 2.0	1.05 J 2.0	0.844 J 2.0	ND 2.0	7.80 2.0	11.3 2.0

Sample ID Lab Sample Number Sampling Date Units	NJDEP Action Level ug/l	NH-1FNW-GBR-S4 P17-1159-27 3/11/17 ug/l RL	NH-1FNW-HIDF P17-1159-28 3/11/17 ug/l RL	NH-1FNW-BBR121-SR P17-1159-29 3/11/17 ug/l RL	NH-1FNW-GBR-S3 P17-1159-30 3/11/17 ug/l RL	NH-1FNW-GBR-S2 P17-1159-31 3/11/17 ug/l RL	NH-1FNW-LODF P17-1159-32 3/11/17 ug/l RL	NH-BBR1E-RS P17-1159-34 3/11/17 ug/l RL
Lead	15	12.5 2.0	ND 2.0	13.3 2.0	9.44 2.0	10.3 2.0	ND 2.0	7.19 2.0


- Results above USEPA Action Level
 ND - None Detected
 RL - Reporting Limit
 J - Estimated Result

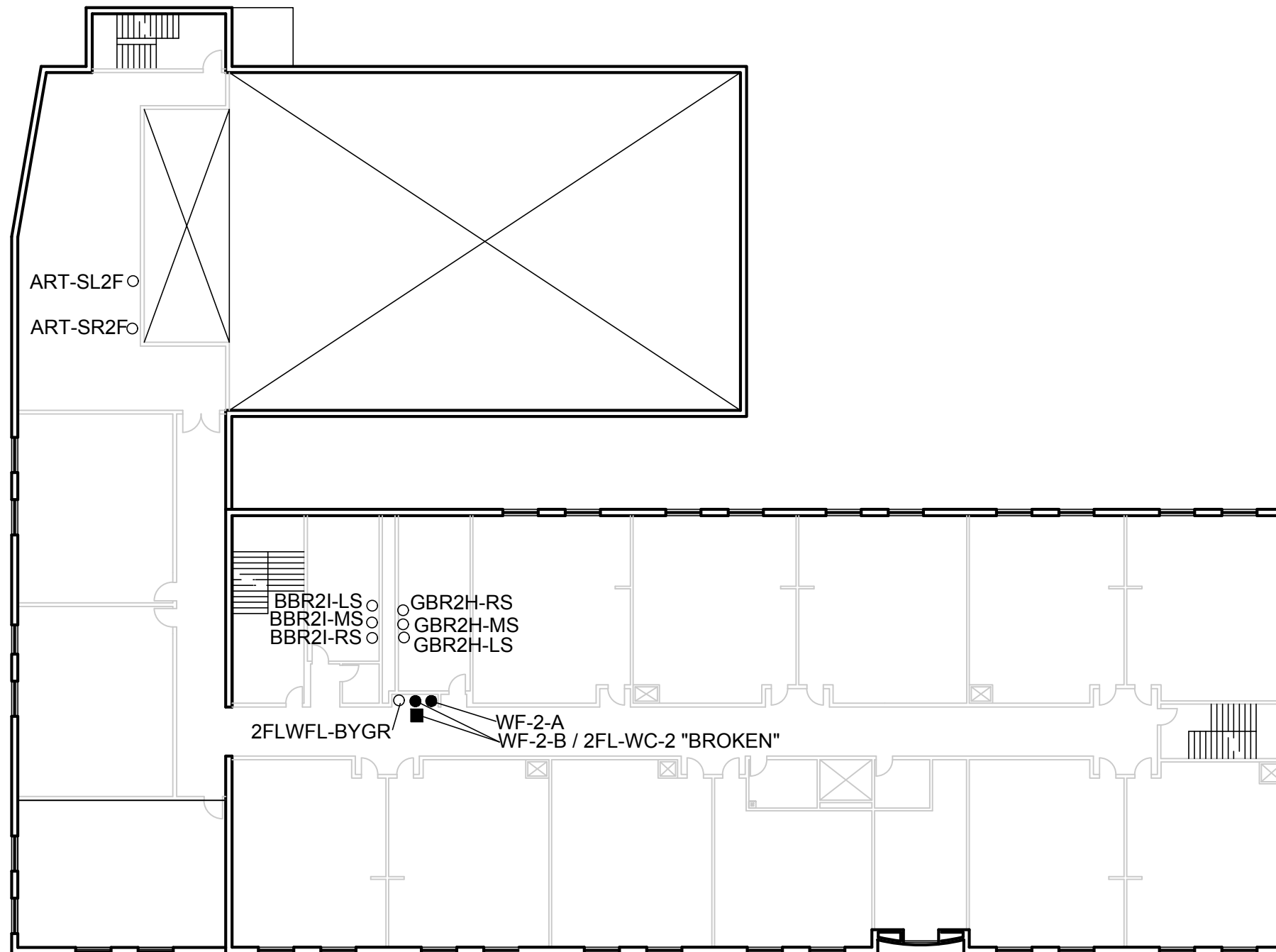


LEGEND

- - 2016 POTABLE WATER SAMPLE LOCATION
- - MARCH 1, 2017 POTABLE WATER SAMPLE LOCATION
- - MARCH 11, 2017 POTABLE WATER SAMPLE LOCATION
- ⊕ - HARD LINE WATER COOLER

NOTE: NOT TO SCALE


 WHITMAN <small>CERTIFICATE OF AUTHORIZATION No. 24GA2809600</small>	NEW HORIZONS COMMUNITY CHARTER SCHOOL 2-12 14TH STREET (AKA 45 HAYES STREET) AND 59 HAYES STREET NEWARK, NEW JERSEY	
	1ST FLOOR	
PROJECT MANAGER: J.T.	DRAWN BY: M.E.D.	PROJECT NO: 160318T
CHECKED BY: J.T.	DATE: MARCH 2017	FIGURE NO: 1A

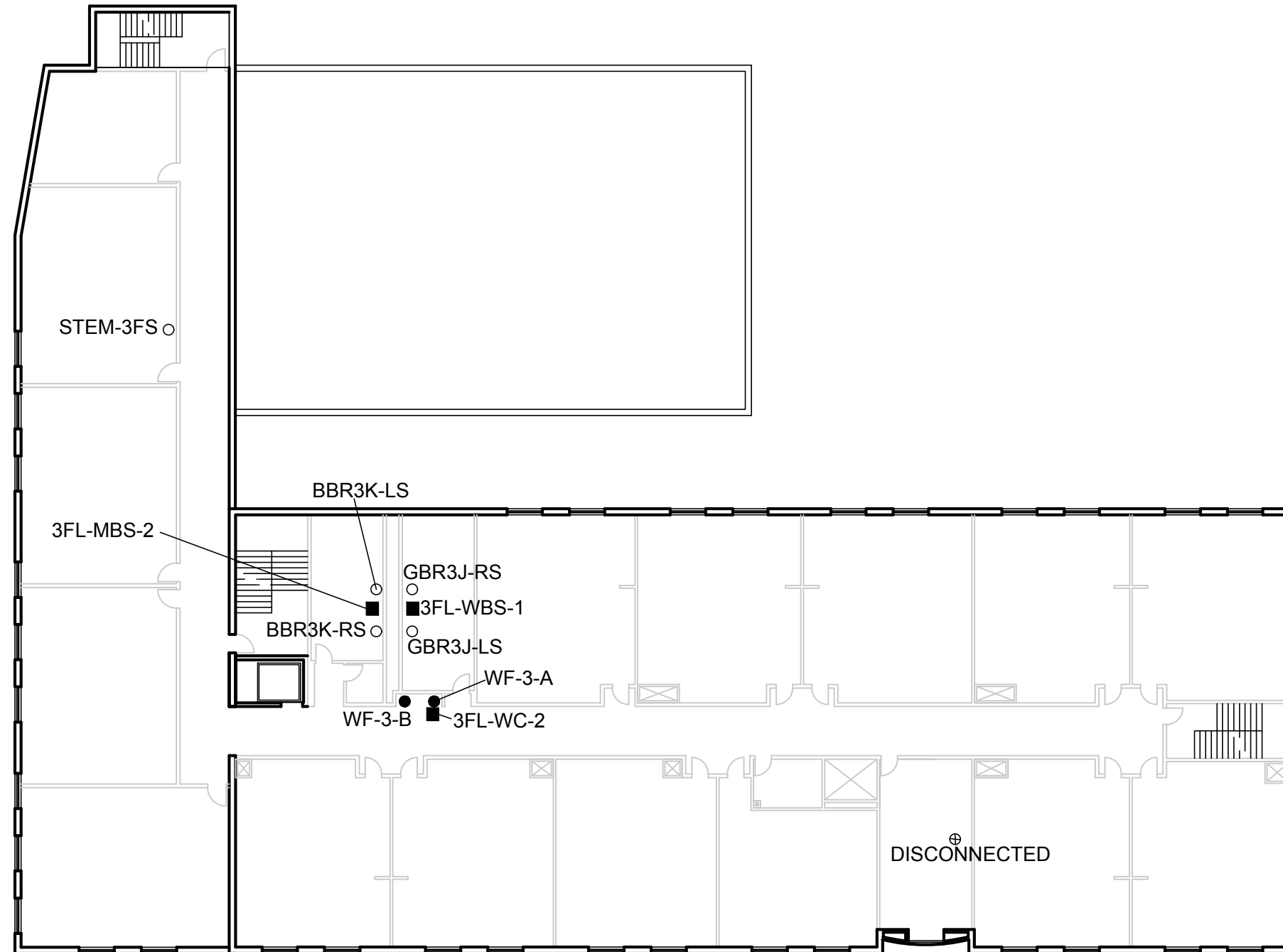


LEGEND

- - 2016 POTABLE WATER SAMPLE LOCATION
- - MARCH 1, 2017 POTABLE WATER SAMPLE LOCATION
- - MARCH 11, 2017 POTABLE WATER SAMPLE LOCATION

NOTE: NOT TO SCALE


 WHITMAN <small>CERTIFICATE OF AUTHORIZATION No. 246A2809600</small>	NEW HORIZONS COMMUNITY CHARTER SCHOOL 2-12 14TH STREET (AKA 45 HAYES STREET) AND 59 HAYES STREET NEWARK, NEW JERSEY	
	2ND FLOOR	
PROJECT MANAGER: J.T.	DRAWN BY: M.E.D.	PROJECT NO: 160318T
CHECKED BY: J.T.	DATE: MARCH 2017	FIGURE NO: 1B



LEGEND

- - 2016 POTABLE WATER SAMPLE LOCATION
- - MARCH 1, 2017 POTABLE WATER SAMPLE LOCATION
- - MARCH 11, 2017 POTABLE WATER SAMPLE LOCATION
- ⊕ - HARD LINE WATER COOLER

NOTE: NOT TO SCALE

 WHITMAN <small>CERTIFICATE OF AUTHORIZATION No. 24GA2809600</small>	NEW HORIZONS COMMUNITY CHARTER SCHOOL 2-12 14TH STREET (AKA 45 HAYES STREET) AND 59 HAYES STREET NEWARK, NEW JERSEY	
	3RD FLOOR	
PROJECT MANAGER: J.T.	DRAWN BY: M.E.D.	PROJECT NO: 160318T
CHECKED BY: J.T.	DATE: MARCH 2017	FIGURE NO: 1C